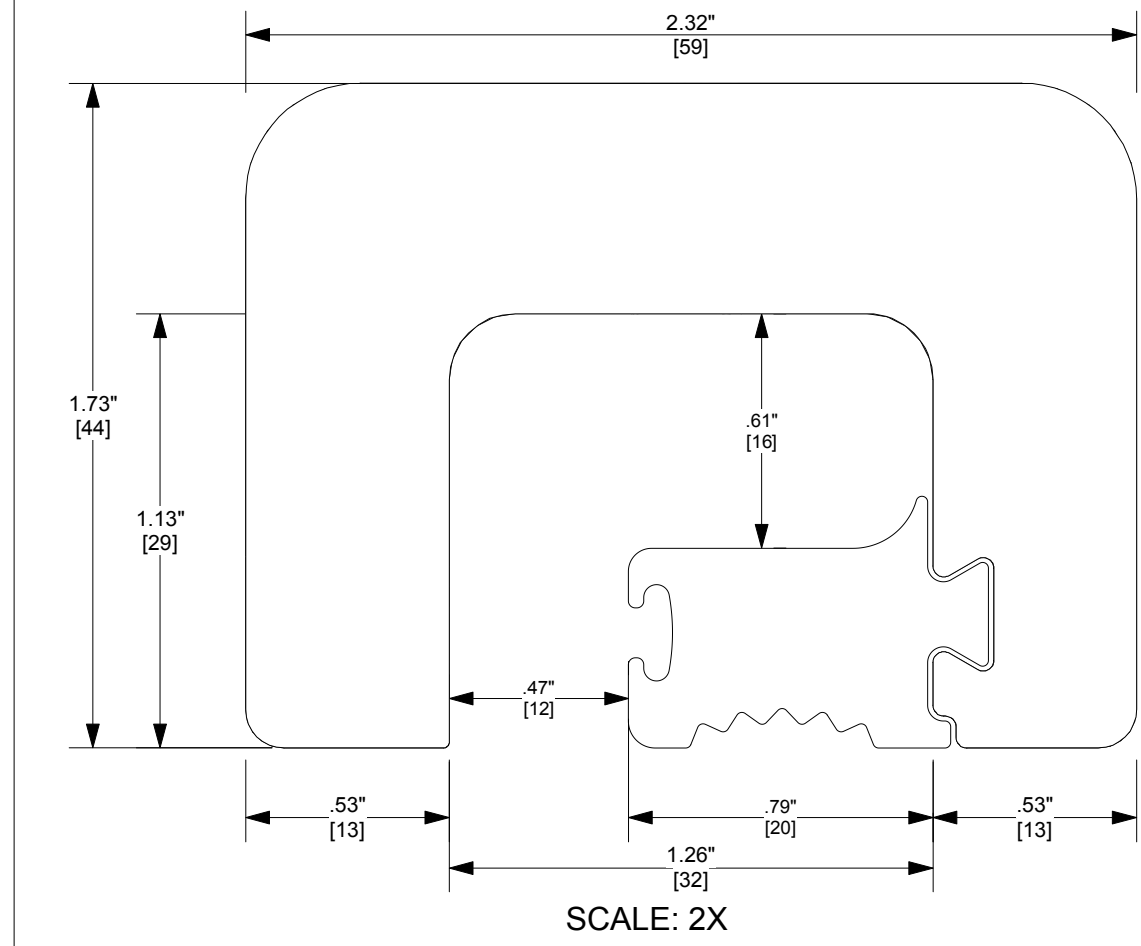
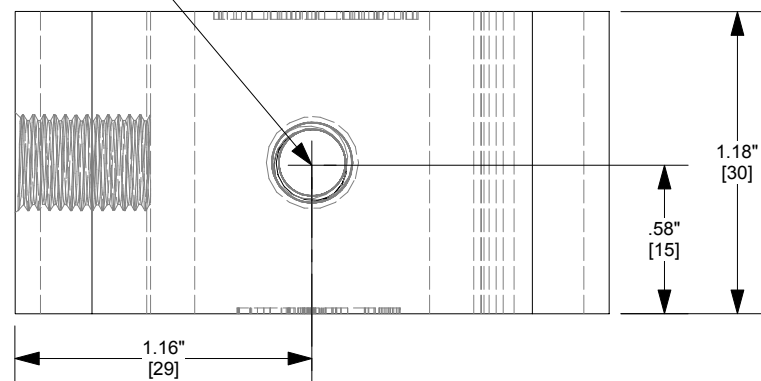
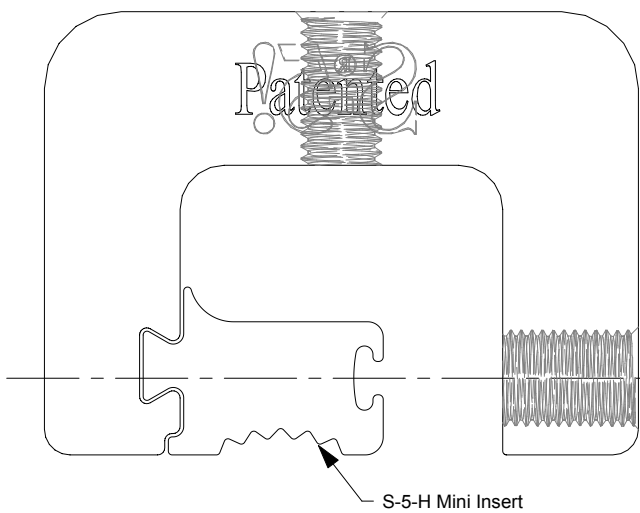


1.25 THREADED HOLE

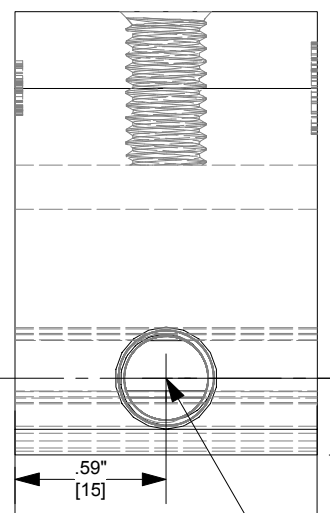
TOP



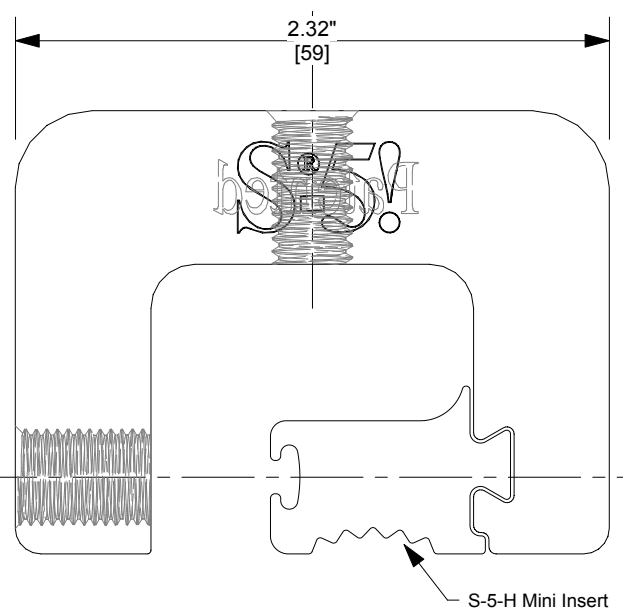
SCALE: 2X



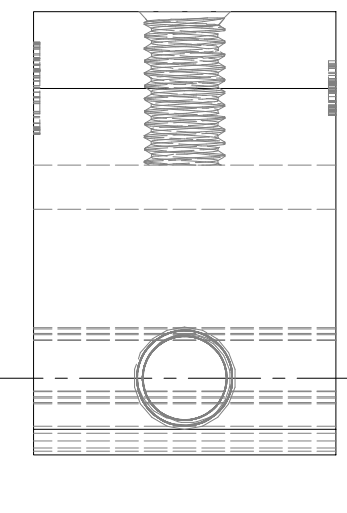
BACK



LEFT



FRONT

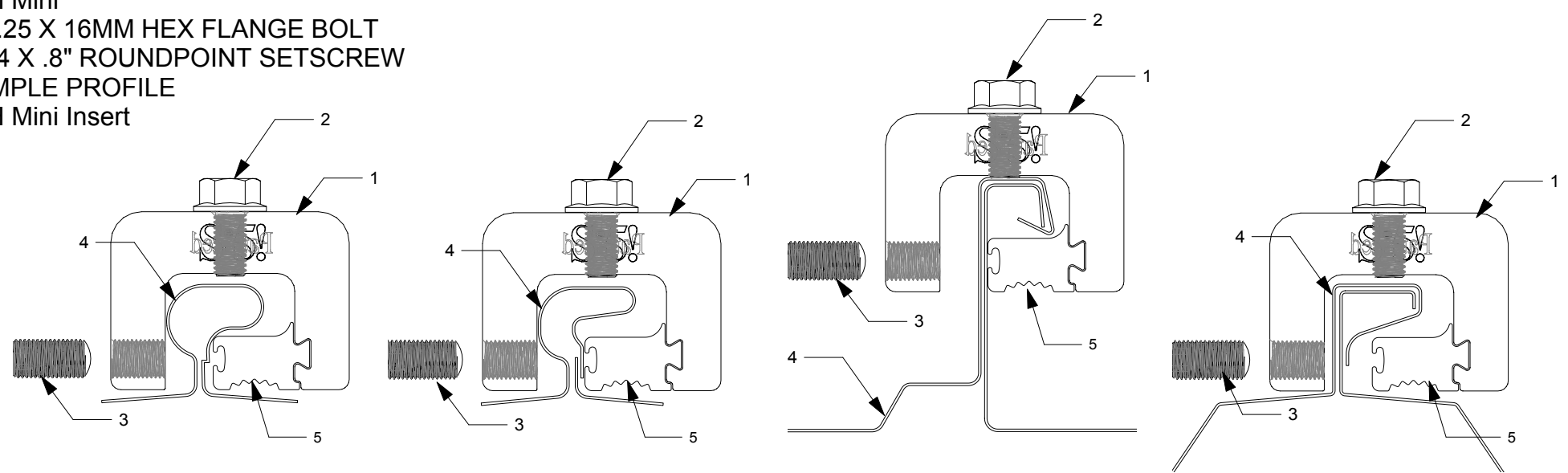


RIGHT

3/8-24 THREADED HOLE

**General Notes**

1. S-5-H Mini
2. M8-1.25 X 16MM HEX FLANGE BOLT
3. 3/8-24 X .8" ROUNDPOINT SETSCREW
4. EXAMPLE PROFILE
5. S-5-H Mini Insert



**FOR STANDING SEAM SPECIFIC MECHANICAL LOAD TEST INFORMATION AND CLAMP INSTALLATION INFORMATION PLEASE VISIT: WWW.S-5.COM**

MATERIAL:	<b>6000 SERIES AL</b>
EST ASSEMBLY WEIGHT :	
SUPPLIED HARDWARE:	M8-1.25 X 16MM (16MM HEX) 18/8 SS 3/8-24 X .800" 18/8 SS
SCALE:	<b>1:1</b>
OTHER:	

METAL ROOF INNOVATIONS, LTD.  
8655 TABLE BUTTE RD  
COLORADO SPRINGS, CO 80908  
719-495-0518  
719-495-0045 (FAX)

**The Right Way!**

TITLE <b>S-5-H Mini</b>		
DRAWING NO.	H A-1-A CCD	DATE 08/19/2014
DRAWN BY	Gabor Jacso	
<p><small>S-5!® PRODUCTS ARE PROTECTED BY MULTIPLE U.S. PATENTS INCLUDING 5,228,248, 5,983,588 AND 6,164,033 (OTHERS ISSUED AND PENDING). EUROPEAN PATENTS ARE ALSO APPLIED FOR AND PENDING UNDER THE PATENT COOPERATION TREATY WITH DIVISIONAL FILING RIGHTS RETAINED. METAL ROOF INNOVATIONS, LTD. (LICENSOR OF S-5!® TECHNOLOGY) AGGRESSIVELY PROSECUTES PATENT INFRINGEMENT.</small></p>		